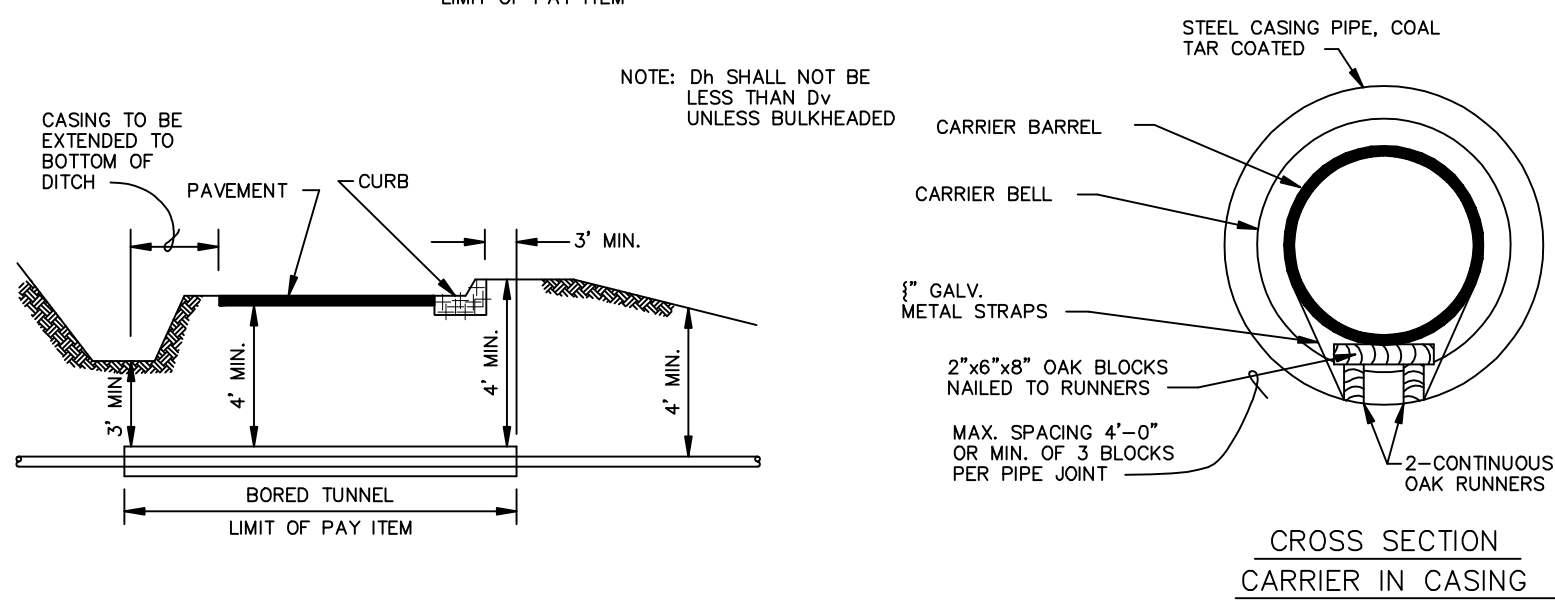
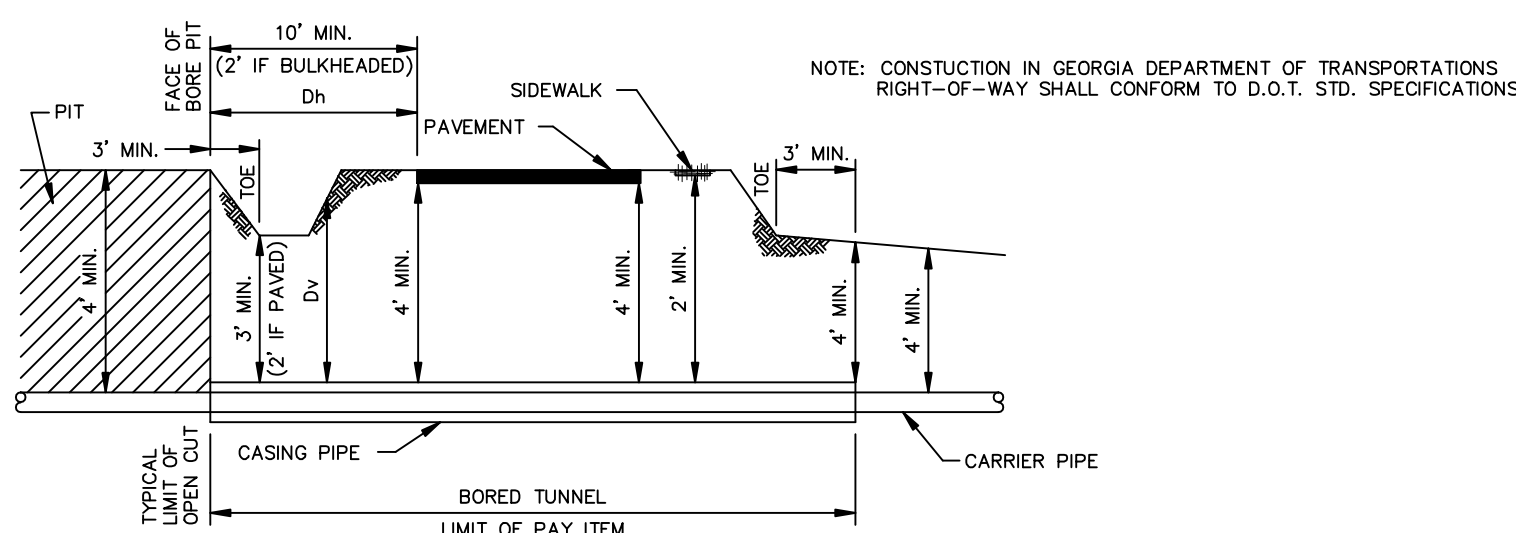


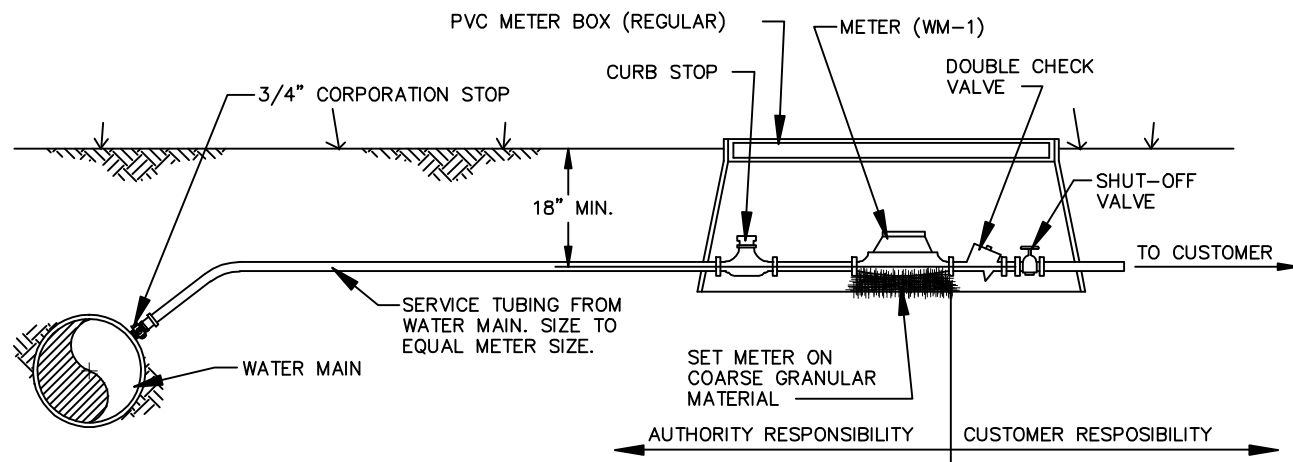
BUTTS COUNTY, ET AL. WATER AND SEWER AUTHORITY
MATERIAL SPECIFICATION SUMMARY
All products must meet ANSISNF Standard 61 for Drinking Water System Components

ITEM	SPECIFICATION
Water Pipe, 6" and larger	C909 PVC(O) (MO), Push-on joint, CI OD, 150 psi (Ultra Blue) preferred OR C900 PVC, Push-on joint, DR 18, CI 150, no JM or NAP brand OR Ductile Iron, ANSIAWWA C151/A21.51, Pressure Class 350 min., exterior coat of bituminous and interior cement mortar lining
Fire Hydrants	41/2" valve opening, 3-way, American Darling ME-73-1, Mueller Super Centurion, M&H Model 129 or AVK brands ONLY, must be factory painted silver directly over primer (NO RE-PAINTS!) Hydrants are to be installed with hydrant tees, anchor couplings, and 6" gate valves
Gate Valves, 6" and larger	Max separation of 750' on existing county roads, 500' in subdivisions & commercial developments Mechanical joint, resilient seat conforming to AWWA 500, 2" square operating nut. Must have epoxy coat inside and outside. American, Clow, M&H, or Mueller brands only.
Fittings	Short body ductile iron fittings for 350 psi water pressure conforming to ANSIAWWA C110/A21.0 or ANSIAWWA C153/A21.53; Cement lined with bituminous outside coating. Imports are acceptable.
Tapping Sleeves and Valves	Tapping sleeves shall be fabricated stainless steel. JCM Models 432, 462 or equal. Tapping valves shall be gate valves furnished in accordance with specifications shown above with flanged connection to the tapping sleeve and nry connection to the branch pipe.
Valve Boxes	Heavy roadway type cast iron, two piece slip or crew type with drop covers. Imports are acceptable.
Valve Collars	24"x24"x4" concrete pads with 9" opening
Locate Wire	14 gauge coated copper
Service Tapping Saddles, 3/4" & 1"	less than 10" : Bronze single band (Ford model S80, Mueller model H-18000, McDonald model 3801 only) 10" & up: Stainless steel single band (Smith-Blair 315, 325, or equal)
Meter Boxes	DFW Alliance 1200, Carson #10152026, or exact equal, plastic box. Vestal 1419, or exact equal, cast iron lid
Corporation Stops, 3/4" & 1"	Mueller H-15008, Ford F1000 or AY McDonald 4701T ONLY
Curb Stops, 3/4" & 1"	Main Pressure Less than 90 psi: Ford B43-232WG, B43-444WG or Mueller, AY McDonald equal; Main Pressure Greater than 90 psi: Ford B41-233WG, B41-444WG or Mueller, AY McDonald equal;
Service Line	Type K soft copper tubing,
Valve Markers	To be provided by Water Authority
ALL OTHER MATERIALS	Ask for information

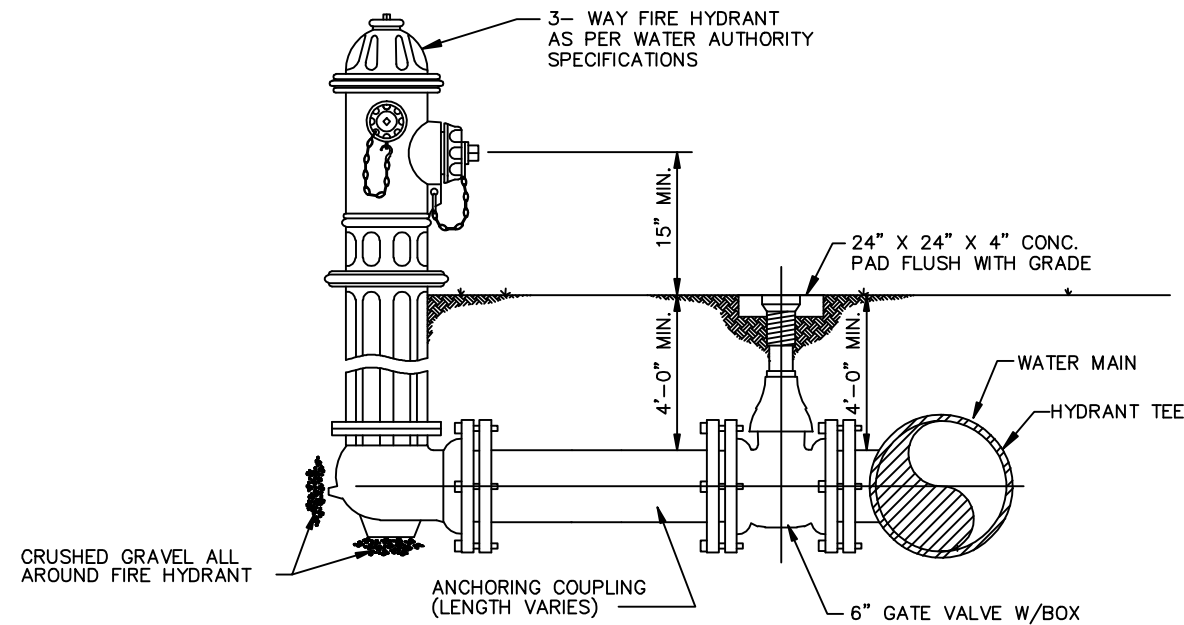
Updated April 19, 2011



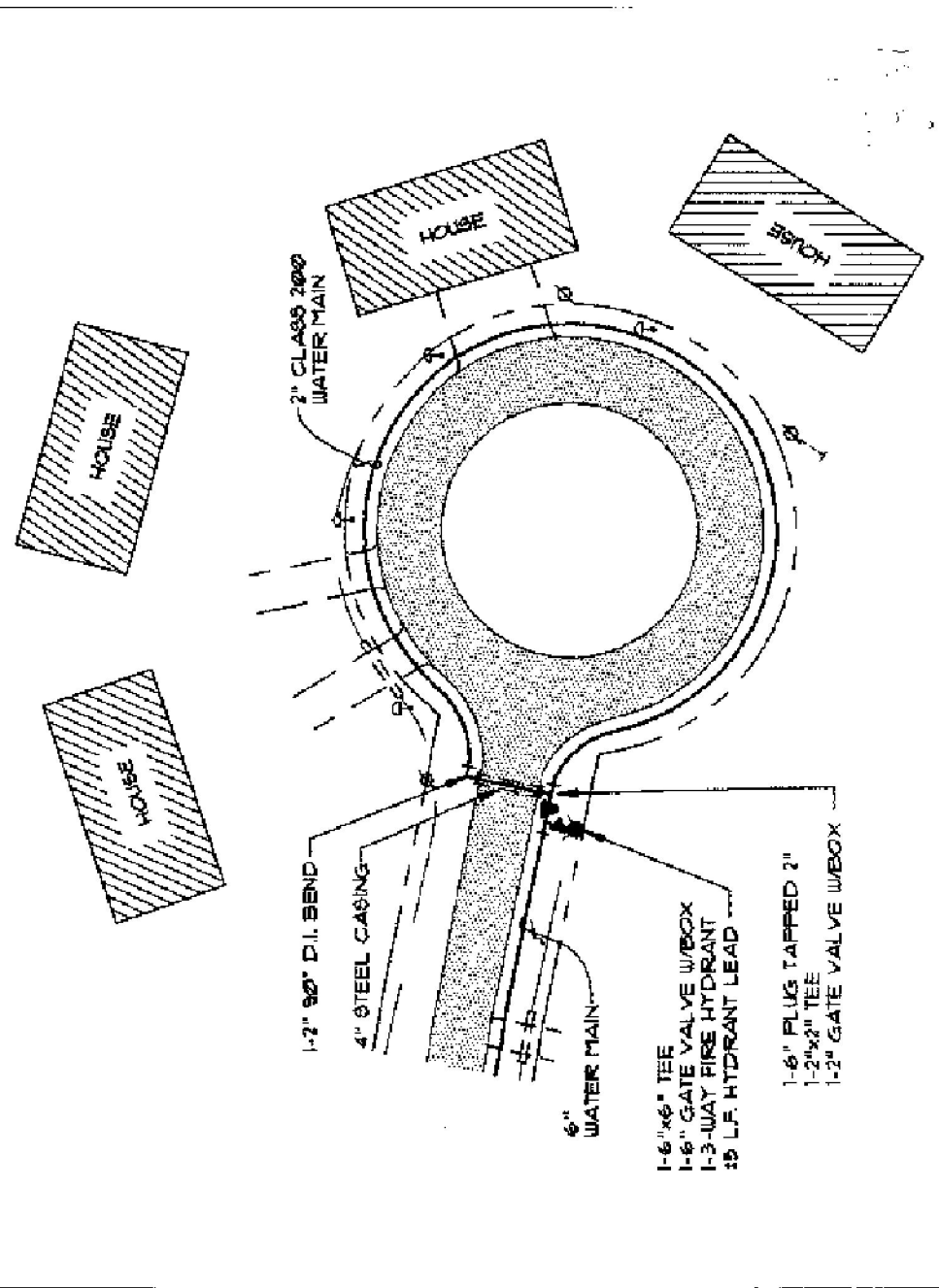
HIGHWAY UTILITY CROSSING DETAIL
N.T.S.



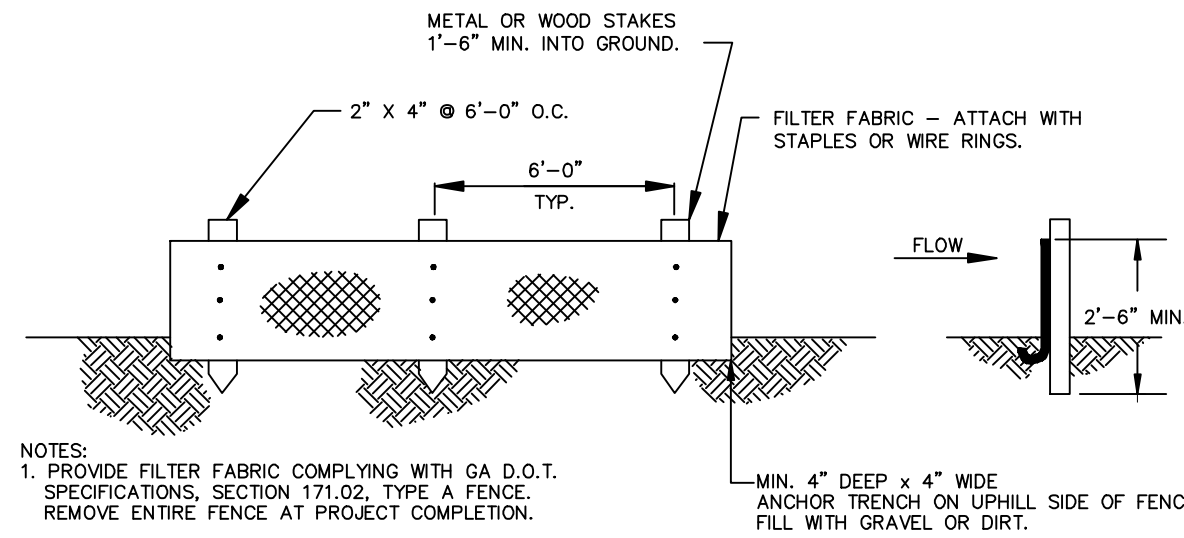
DETAIL - STANDARD SERVICE CONNECTION
N.T.S.



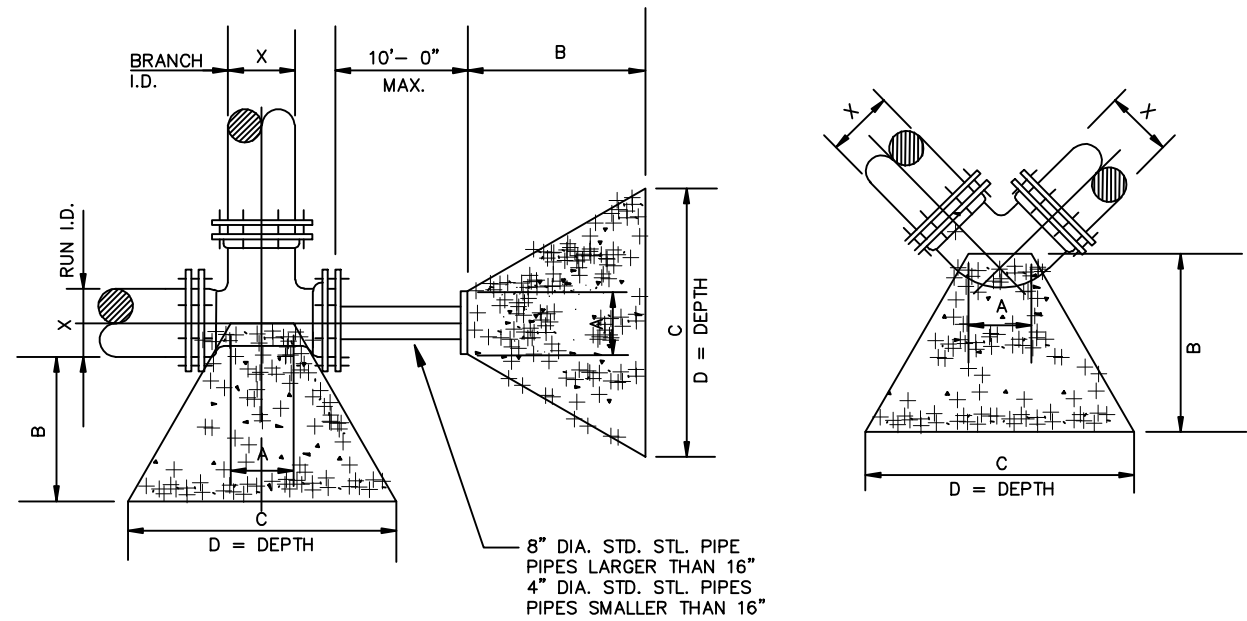
DETAIL - TYPICAL FIRE HYDRANT SETTING
N.T.S.



DETAIL - VALVE SETTING AND BOX
N.T.S.



DETAIL - SILT FENCE
N.T.S.



DETAIL - THRUST BLOCK
N.T.S.

BLOCKING DIMENSIONS												
BENDS						BENDS						
X	A	B	C	D		X	A	B	C	D		
30"	2'-0"	11'-6"	15'-3"	6'-0"		30"	1'-0"	2'-10"	4'-3"	3'-0"		
24"	2'-0"	7'-9"	10'-9"	5'-6"		24"	1'-0"	2'-6"	3'-8"	2'-6"		
20"	1'-9"	6'-0"	8'-6"	5'-0"		20"	10"	2'-0"	3'-0"	2'-0"		
16"	1'-3"	4'-0"	6'-0"	4'-6"		16"	16"	1'-8"	2'-6"	1'-6"		
12"	10"	2'-9"	4'-0"	4'-0"		12"	8"	1'-0"	1'-6"	1'-6"		
10"	10"	2'-6"	3'-9"	3'-0"		10"	10"	1'-0"	1'-6"	1'-0"		
8"	8"	1'-9"	2'-6"	2'-6"		8"	8"	1'-0"	1'-6"	1'-0"		
6"	6"	1'-3"	2'-0"	2'-0"		6"	6"	1'-0"	1'-0"	1'-0"		
4"	4"	1'-0"	1'-6"	1'-6"		4"	4"	1'-0"	1'-0"	9"		
TEES & DEAD ENDS						TEES & DEAD ENDS						
X	A	B	C	D		X	A	B	C	D		
30"	3'-0"	8'-9"	13'-0"	5'-0"		30"	3'-0"	8'-9"	13'-0"	5'-0"		
24"	2'-6"	7'-3"	10'-8"	3'-9"		24"	2'-6"	7'-3"	10'-8"	3'-9"		
20"	2'-0"	5'-3"	8'-0"	3'-6"		20"	2'-0"	5'-3"	8'-0"	3'-6"		
16"	1'-0"	4'-8"	6'-4"	3'-0"		16"	1'-0"	4'-8"	6'-4"	3'-0"		
12"	10"	2'-9"	4'-6"	2'-6"		12"	10"	2'-9"	4'-6"	2'-6"		
10"	10"	2'-0"	3'-3"	2'-6"		10"	10"	2'-0"	3'-3"	2'-6"		
8"	8"	1'-0"	1'-9"	1'-9"		8"	8"	1'-0"	1'-9"	1'-9"		
6"	6"	1'-0"	1'-6"	1'-6"		6"	6"	1'-0"	1'-6"	1'-6"		
4"	4"	1'-0"	1'-3"	1'-3"		4"	4"	1'-0"	1'-3"	1'-3"		

NOTE: 200 P.S.I. TEST PRESSURE
SOIL BEARING OF 2500 P.S.F.
3000 P.S.I. CONCRETE
PIPE LESS THAN 4" IN DIAMETER
SHALL HAVE THE SAME REQUIREMENTS
AS 4" DIAMETER PIPE

WATER DISTRIBUTION SYSTEM NOTES:

- ALL WATER MAINS INSTALLED WITHIN THE BUTTS COUNTY WATER AND SEWER AUTHORITY JURISDICTION MUST MEET THE AUTHORITY'S SPECIFICATIONS.
- ALL ENGINEERING PLANS FOR EXTENSIONS MUST BE SEPARATELY REVIEWED AND APPROVED BY THE BUTTS COUNTY, ET AL. WATER & SEWER AUTHORITY, AND A PRECONSTRUCTION CONFERENCE WITH CONTRACTOR IS REQUIRED PRIOR TO THE BEGINNING OF ANY INSTALLATION.
- WATER LINES TO BE CONSTRUCTED PER BUTTS COUNTY'S UTILITY PLACEMENT STANDARDS AND AT A TYPICAL AND MINIMUM DEPTH OF 48".
- ALL SERVICE TUBING SHALL BE TYPE "K" SOFT COPPER TUBING, 3/4" FOR SINGLE SERVICE.
- REFER TO WATER DETAIL SHEET & BUTTS CO. WATER & SEWER AUTHORITY SPECIFICATIONS FOR ADDITIONAL MATERIAL SPECS.
- THE BUTTS W & S AUTHORITY WILL SET WATER METERS IN METER BOXES INSTALLED BY THE CONTRACTOR.
- ALL GATE VALVES ARE TO BE INSTALLED OUTSIDE OF PAVEMENT AND CURB.
- THE SPACING BETWEEN FIRE HYDRANTS WILL BE NOT MORE THAN THE DISTANCE SHOWN FOR DEVELOPMENT TYPES AS FOLLOWS: 500' APART FOR SINGLE FAMILY RESIDENTIAL DEVELOPMENTS, MULTI FAMILY RESIDENTIAL DEVELOPMENTS, AND MOBILE HOME PARKS; 400' APART FOR INDUSTRIAL/COMMERCIAL DEVELOPMENTS, AND 750' APART FOR EXISTING COUNTY ROADS.
- TEMPORARY WATER MAIN ENDS SHALL BE EQUIPPED WITH RESTRAINED JOINT PLUGS OR CAPS. IF CONCRETE THRUST BLOCKS ARE USED, THEY SHALL BE INSTALLED SUCH THAT THEY DO NOT COVER OR INTERFERE WITH ACCESS TO THE TEMPORARY MAIN END FOR FUTURE EXPANSION.
- VALVES NEAR TEES AND/OR CROSSES SHALL BE RESTRAINED TO TEE OR CROSS BY THREADED RODS OR ANCHORING PIPE/FITTINGS.
- WATER SERVICE TAPS SHALL BE MADE SUCH THAT THEY CENTER ON THE LOT WHENEVER POSSIBLE. WHEN TAPS MUST BE PLACED AT LOT CORNERS, THEY SHOULD BE PLACED AT LEAST 5' FROM PROPERTY LINES SO AS TO NOT INTERFERE WITH OTHER UTILITY SERVICE CONNECTIONS.
- VALVE MARKERS MUST BE OBTAINED DIRECTLY FROM THE BUTTS COUNTY WATER AUTHORITY.
- MARK EACH METER BOX WITH A "W" CUT INTO TOP OF CURB.
- MARK EACH VALVE BOX WITH A "V" CUT INTO TOP OF CURB.
- COATED 14 GAUGE LOCATE WIRE IS REQUIRED.
- THE CONTRACTOR MUST ATTEND A PRECONSTRUCTION CONFERENCE WITH AUTHORITY STAFF PRIOR TO BEGINNING ANY WORK.
- ALL WET TAPS MUST BE PERFORMED WITH AUTHORITY STAFF PRESENT.
- PRIOR TO INITIATION OF SERVICE, PROJECT MUST PASS INSPECTION INCLUDING A PRESSURE TEST AND BACTERIA TEST.
- THE INSTALLER WILL MAINTAIN FIELD "AS-BUILT" DRAWINGS AND WILL MEASURE AND SHOW INSTALLED LOCATIONS OF ALL MAINS, VALVES, HYDRANTS, AND SERVICES.

BUTTS COUNTY, ET AL.
WATER & SEWER AUTHORITY
100 W. SECOND STREET
P.O. BOX 145
JACKSON, GA 30233
MARGIE SELED, GEN MGR
RUSSELL NAIL, Supt
ALYSSA HOPSON, TECH
770-775-0042 MAIN
770-775-2009 |
MAIL@BUTTSWSA.COM

BUTTS COUNTY, ET AL. WATER & SEWER AUTHORITY
STANDARD WATER DETAILS

