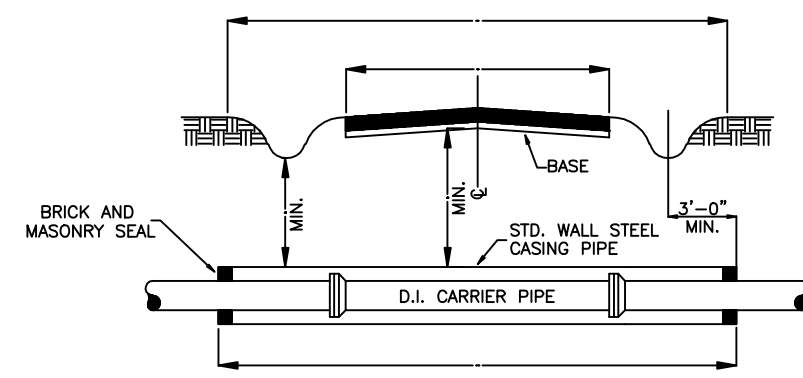
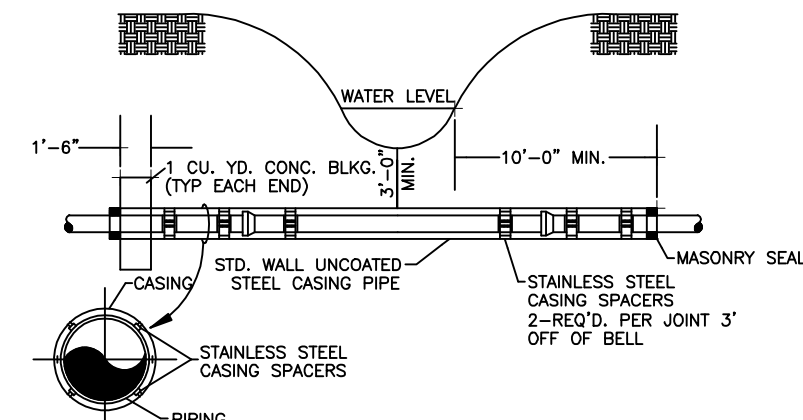




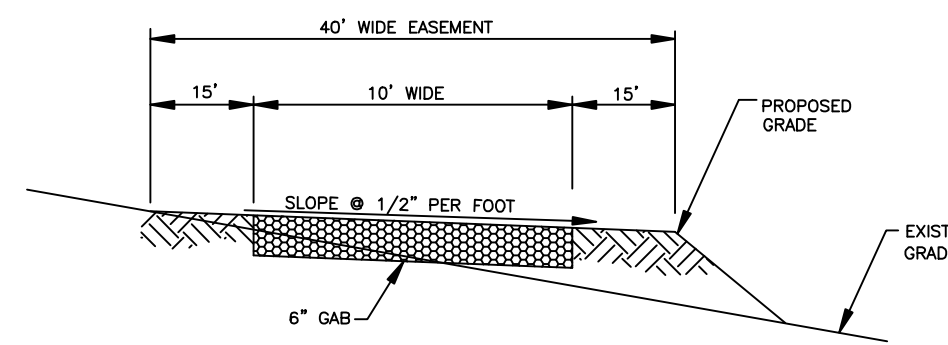
**BUTTS COUNTY, ET AL. WATER & SEWER AUTHORITY  
STANDARD SEWER DETAILS**



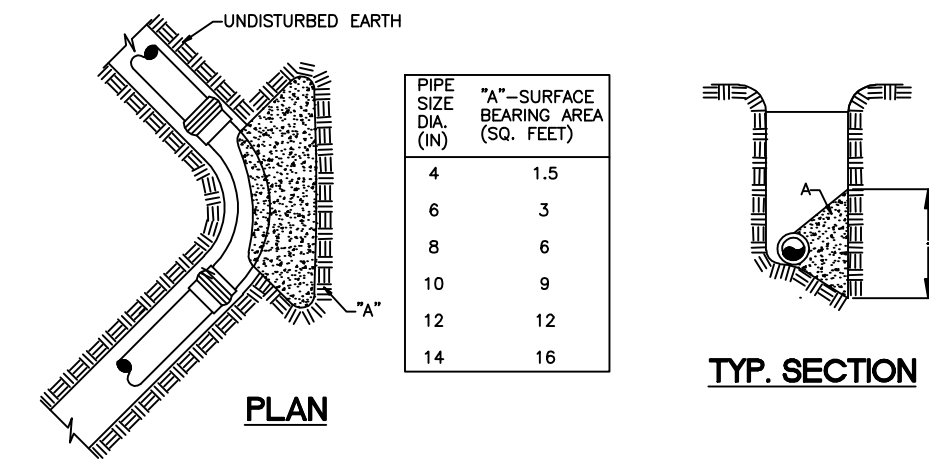
**JACK AND BORE CROSSING**  
N.T.S.



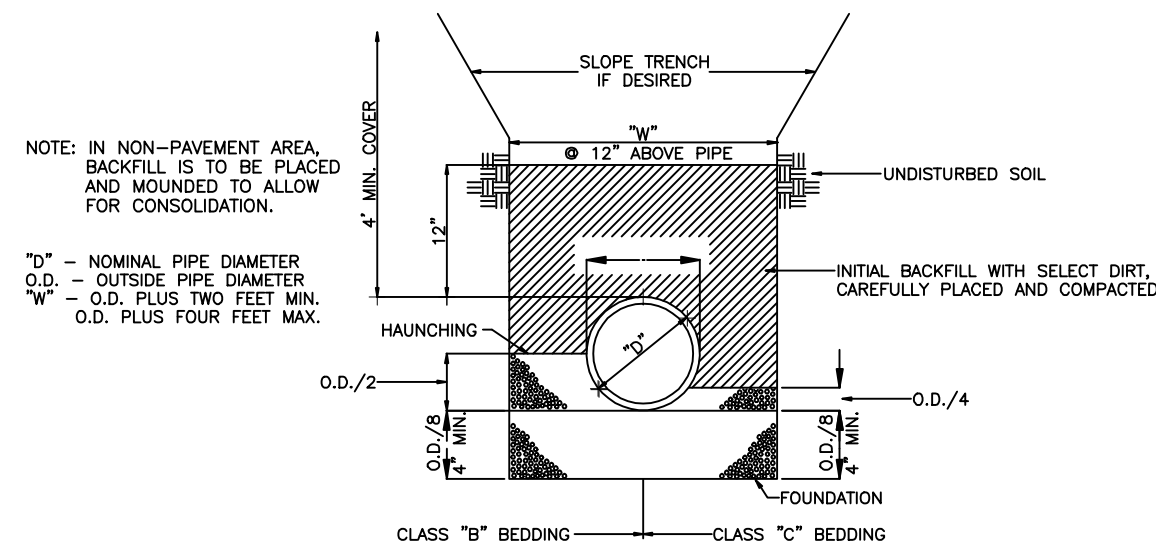
**TYPICAL CREEK CROSSING**  
N.T.S.



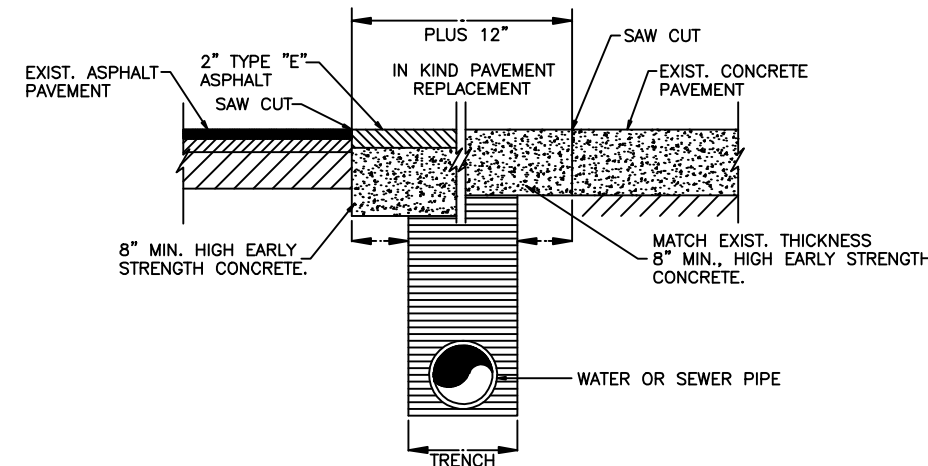
**TYPICAL ACCESS ROAD  
CROSS SECTION**  
N.T.S.



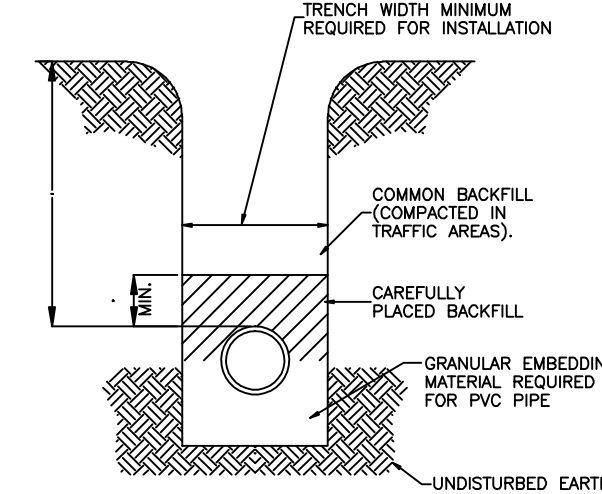
**FORCE MAIN  
THRUST BLOCKS**  
N.T.S.



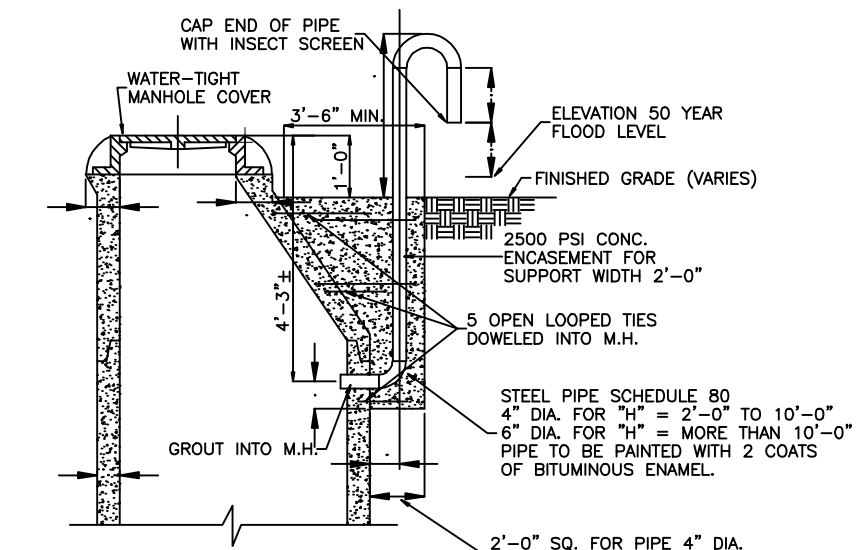
**CLASS B AND C  
SEWER PIPE BEDDING**  
N.T.S.



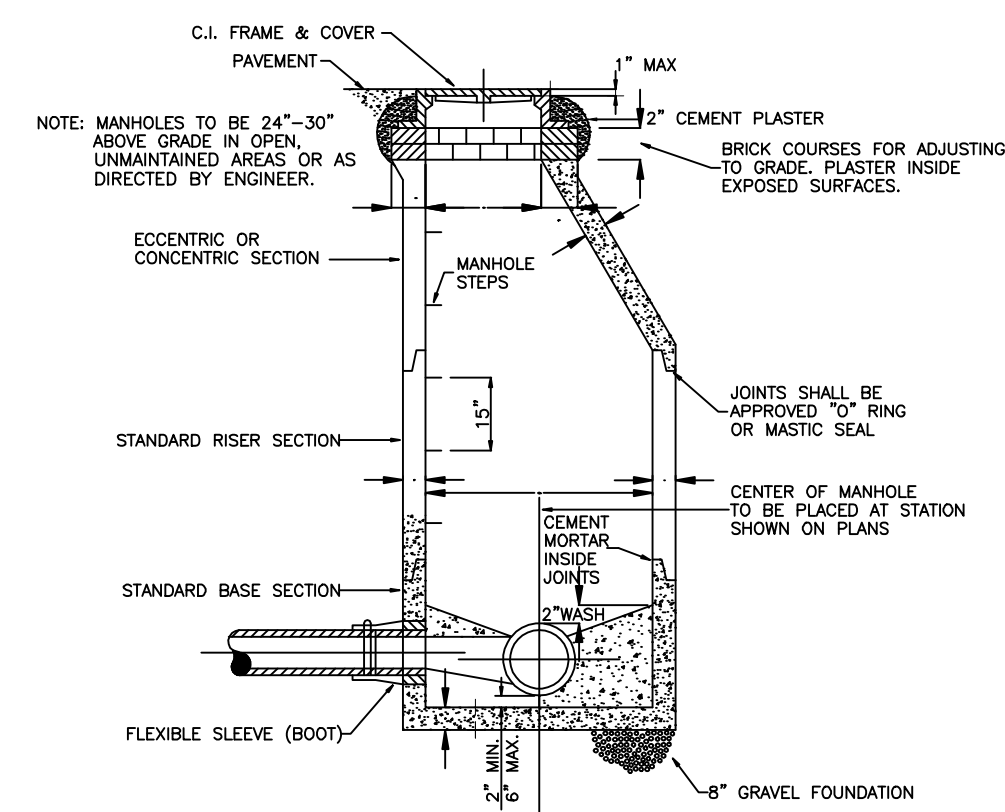
**PAVEMENT REPLACEMENT**  
N.T.S.



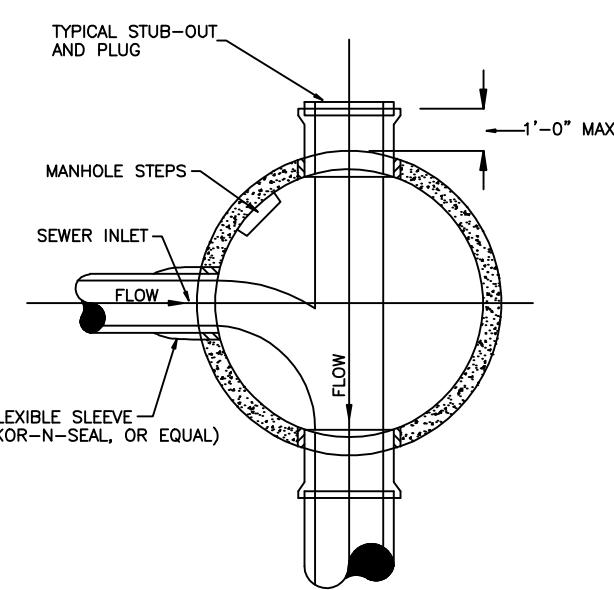
**TYPICAL FORCE  
MAIN TRENCH**  
N.T.S.



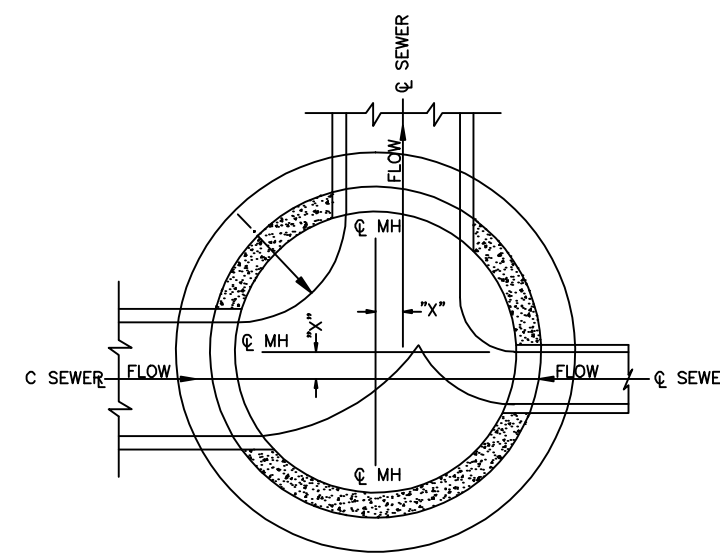
**VENTED MANHOLE DETAIL**  
N.T.S.



**STANDARD PRECAST 4'-0" MANHOLE**  
N.T.S.



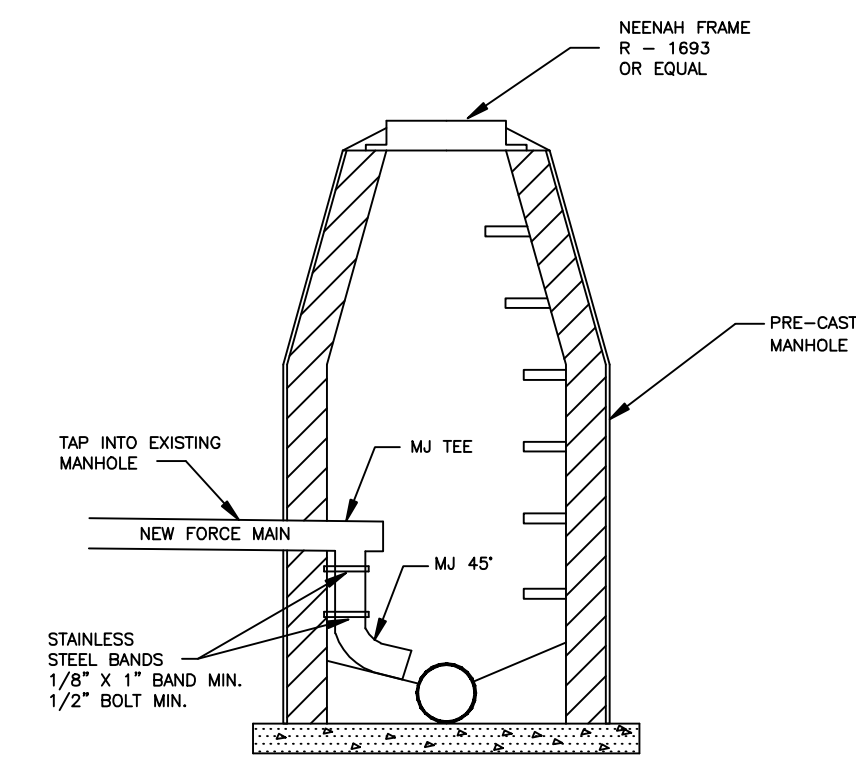
**PLAN**  
N.T.S.



**SECTIONAL PLAN**  
N.T.S.

STANDARD PRECAST MANHOLES SCHEDULE OF GOVERNING DIMENSIONS			
PIPE SIZE	M.H. DIA.	"R"	"X"
8" THRU 12"	4'	11'-0"	0"
15"	4'	11'-3"	6"
18"	4'	11'-4"	8"
21"	5'	11'-9"	9"
24"	5'	11'-6"	9"
27"	6'	2'-0"	1'-0"
30"	6'	11'-9"	8"
36"	PIPE-BED PIPE M.H. BASE AND ELBOW UNIT		

**GOVERNING DIMENSIONS FOR PRECAST MANHOLES**



**FORCE MAIN TO  
SANITARY MANHOLE**  
N.T.S.

**BUTTS COUNTY, ET AL.**  
**WATER & SEWER AUTHORITY**  
 100 W. SECOND STREET  
 P.O. BOX 143  
 JACKSON, GA 30233  
 MARGIE SELED, GEN MGR  
 RUSSELL NAIL, SUPT  
 ALYSSA HOPSON, TECH  
 770-775-0042 MAIN  
 770-775-2009 FAX  
 MAIL@BUTTSWSA.COM